



GENSCO | COMMERCIAL

M-Series

- Single Zone .5 – 3 Ton (AC and HP, sizes vary per style)
- MXZ Multi-Zone 20k Btu/h – 5 Ton, up to 8 Indoor Units
- 208 – 230/1ph
- Hyper Heat available in select sizes



P-Series

- Single Zone 1 – 3.5 Ton (AC and HP sizes vary per style)
- 208 – 230/1ph
- Low Ambient Cooling available (down to -40°F with accessories)
- Hyper Heat available in select sizes

S-Series

- 3 – 5 Ton HP
- 208 – 230/1ph
- Single or Multiple Indoor Units
- Low Ambient Cooling to 5°F (accessories required)
- Hyper Heat available in select sizes



N-Generation

Y-Series

- 6 – 36 Ton HP (Hyper Heat available in select sizes)
- Single modules up to 20 Tons
- Air and Water Source Condensers available
- 208 – 230/3 and 460/3ph
- Low Ambient Cooling to -10°F (accessories required)

R2-Series

- 6 – 36 Ton (Hyper Heat available in select sizes)
- Single modules up to 20 Tons
- Air and Water Source Condensers available
- 208 – 230/3 and 460/3ph
- Simultaneous heating and cooling





MLZ

M-Series Indoor Units

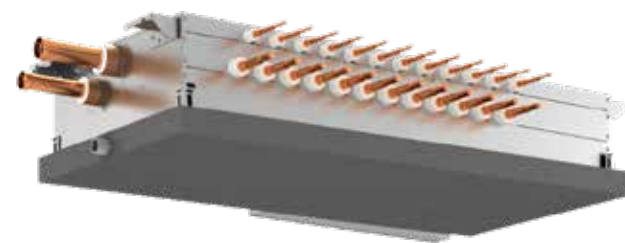
- Wall Mounts
- Floor Mounts
- Slim Ducted
- 1-Way Ceiling Cassettes
- 4-Way Ceiling Cassettes
- Air Handlers

PLA



P-Series Indoor Units

- Wall Mounts
- Ceiling Suspended
- 4-Way Cassettes
- Slim Ducted
- Air Handlers



BC Controllers

- For R2 Series only
- Ability to connect up to 11 sub BC Controllers
- Increased capacity of main BC, up to 36 Tons when Sub BC is attached
- Reduced unit height from 11.37" to 9.68"
- Service access now from the bottom
- 4 – 16 Port Single
- 8 – 16 Port Main
- 4 – 8 Port Sub

CITYMULTI®



PKFY-P12NLMU-E

Indoor Units

- Wall Mounts
 - > PKFY 4 – 30 MBH
- 4-Way Ceiling Cassettes
 - > PLFY 5 – 48 MBH
- 1-Way Ceiling Cassettes
 - > PMFY 6 – 15 MBH
- Ceiling Suspended
 - > PCFY 15 – 36 MBH
- Ducted Fan Coils
 - > 6 – 24 MBH (low static)
 - > 6 – 54 MBH (medium static)
 - > 15 – 96 MBH (high static)
- Air Handlers
 - > PVFY 12 – 54 MBH
- Floor Mounted
 - > PFFY 6 – 24 MBH
 - > Concealed or Exposed
- Hydronic Heat Exchangers
 - > PWFY 36 and 72 MBH
 - > Y and R2 Series only



PVFY

Diamond Controls

- Can control not just the VRF, but many different pieces of equipment including 3rd party HVAC equipment, lighting, metering, etc.
- Can integrate with other systems using BACnet, LON and Modbus
- Utilizes prebuilt templates giving better control along with cost and time savings for the Customer
- Access the entire system and maintenance tool remotely for troubleshooting from anywhere
- Dedicated customer service staff for controls support

Central Controllers

- AE 200 Touch Screen Controls up to 200 Indoor Units (expansion controllers required)
- EW-50 Expansion Controller

Zone Controllers

- Stand Alone Controllers
- Programmable and non-programmable styles available

MIA PAR-CT01MAU-SB



GPS Clears the Air of Particles Faster

Particulate matter includes pollutants, dust, allergens, mold, bacteria and viruses. GPS technology constantly generates a high concentration of positively and negatively charged ions. These ions travel through the air continuously seeking out and attaching to particles. Larger by virtue of combination, they are more easily captured by the ventilation and filtration systems or become too heavy to remain suspended in the air.

Disclaimer: GPS units have different voltage ranges.



iMOD

- Field assembled in 6" increments up to 240
- The composite and carbon fiber construction allows the iMOD to be mounted in corrosive environments
- Neutralizes odors by destroying VOCs
- Kills mold, bacteria and viruses. Reduces allergens, smoke and other airborne particles

GPS FC-48-AC



FC-48

- Auto-cleaning, lightweight NPBI systems that handle up to 4,800 CFM or 12 tons
- Designed for multiple mounting options including fan inlet, interior duct walls or floors
- The composite construction allows for mounting in corrosive environments

Other GPS Products

- GPS-FC-1
- GPS-FC24-AC
- GPS-FC-3-BAS
- iRIB
- iMEASURE
- GPS-FC-2



GPS DM48-AC

DM-48

- Patent-pending self-cleaning design ensures ongoing peak performance
- Easily install for duct systems up to 6 Tons or 2,400 CFM in minutes
- Needlepoint ionization actively treats air in the living space
- Universal mounting with magnets and flexible design with no replacement parts

INDOOR AIR QUALITY

COLUMBIA
HVAC SHEET METAL & SPECIALTY PRODUCTS

Air Scrubber
BY AERUS
WITH CERTIFIED SPACE TECHNOLOGY™



COLUMBIA

Clean Air Starts With a Fresh Air Filter

Pleated filters remove irritants from the air you breathe.

The Columbia HR13 is a MERV 13, pleated-style, disposable air filter suited for both residential and commercial applications. Install with every HVAC system in the building for maximum coverage.

- MERV, Minimum Efficiency Reporting Value, is a value that indicates the size of particles an air filter is designed to capture
- The higher the MERV rating, the more efficient the air filter is at catching harmful pollutants

Air Scrubber

BY AERUS

WITH CERTIFIED SPACE TECHNOLOGY™

AP500 / Pure & Clean

Portable solutions for any workspace.

- Proven to remove or destroy up to 99.9% of all surface and airborne contaminants
- Protects from dangerous contaminants and pollutants by purifying the air and significantly reducing dust and odors
- No-hassle installation — simply plug it in!
- AP500: coverage up to 500 sq. ft.
- AP3000: coverage up to 3000 sq. ft.



INDOOR AIR QUALITY

activTek Inducts

The induct 5000 and induct 10000 substantially reduces odors, visible smoke from the air and microbial populations on surfaces, utilizing the patent pending ActivePure Technology. ActivePure consists of a special UV light and photocatalyst target, creating an Advanced Oxidation Process containing several friendly oxidizers.

- Duct or plenum installed natural air system
- Discreet or concealed installation
- 120/240 volt optional installation
- UV bulb monitoring indicator included
- Low maintenance – no cleaning required

Applications

- Install in restaurants and bars
- Install into any building with challenging odor, visible smoke or microbials on surfaces with existing ducts

Our proprietary ActivePure Technology uses light waves and a catalytic process to produce scrubber ions that remove dust particles from the air. Our Certified Space Technology continuously protects and purifies the air and attacks contaminants on all surfaces.



CHECK IT OUT!

- ▶ activTek Induct 5000 covers up to 5,000 sq. ft
- ▶ activTek Induct 10000 covers up to 10,000 sq. ft.

AIR SCRUBBER ADVANCED

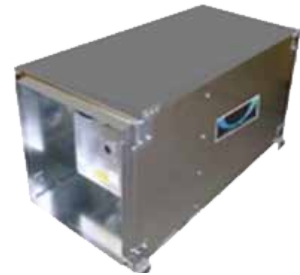
BY AERUS

The ActivePure® Technology built into each Air Scrubber Advanced is based on a variation of the technology originally developed for use on the International Space Station and is recognized as the exclusive Certified Space Technology™ in its category.

- Air Scrubber's proprietary ActivePure® Technology uses light waves and a catalytic process to produce scrubber ions that remove particles from the air 24/7
- Proven to remove or destroy up to 99.9% of all surface and airborne contaminants
- Protects people from dangerous contaminants and pollutants by purifying the air, removing VOCs and significantly reducing dust and odors
- Installed directly to the existing HVAC system ductwork
- Available in ozone and ozone-free models
- Coverage up to 3,000 sq. ft.
- Complies with all Federal EPA, FDA and OSHA regulations



SecureAir Provides Healthy, Clean, Safe & Energy Efficient Indoor Air



APS-1000X

Features

- Portable System allows placement into any targeted space
- System provides up to 800 CFM of continuous air purification

APS-2000X

Features

- Compact horizontal air handler that can be mounted into existing ductwork
- System provides up to 2000 CFM of additional fan powered airflow

AQM-100

Features

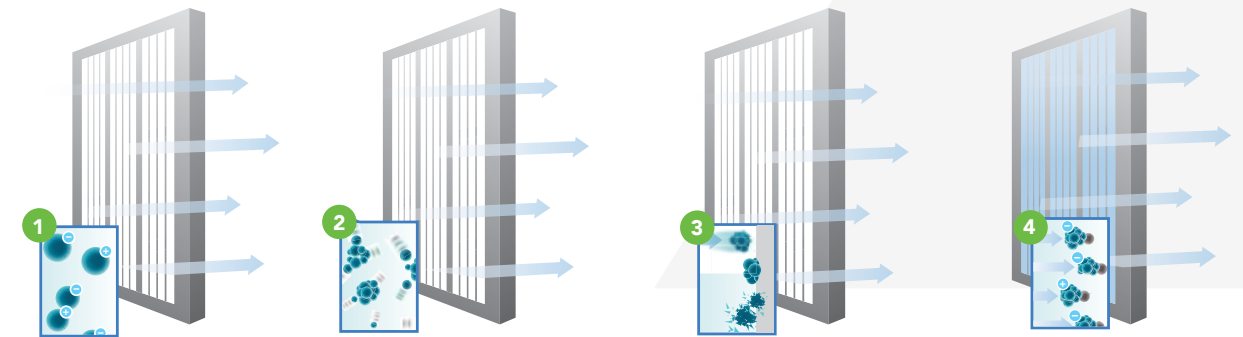
- Indoor Air Quality Monitor that measures both small (0.4 micron) and large (2.5 micron) particles
- Measures the number of particles per cubic foot, not by weight!

ADVANCED COLLECTOR SYSTEM

Features

- Provides Particle Control Technology with MERV 15 Filtration Efficiency
- Airborne Pathogen inactivation thru INACTIVATE™ Technology

ACTIVE Particle Control: How it Works



Step 1: Condition

Particles are "conditioned" with charge

Step 2: Collision

Charged particles are forced to "collide." The particles gain mass and are "net neutral"

Step 3: Capture & Inactivate

Captured pathogens are killed by INACTIVATE™ technology

Step 4: Transport

"Particles that escape" are conditioned to remove critical contaminants from the treated space

A single technology that controls all airborne contaminants!



Mitsubishi's Lossnay is a total heat exchange ventilation system that uses paper characteristics to perform temperature (sensible heat) and humidity (latent heat) exchange. Poor air quality can be attributed to many problems arising in the workplace and in the home. It is believed to contribute to a loss in productivity, low morale and possibly higher rates of illness. Providing good ventilation in residential and commercial buildings is critical to help ensure conditions under which people can live and work safely and comfortably.

Key Features

- All models meet the new 2018 WSEC 1.0W/CFM requirement
- Four fan speeds on 300, 470, 600 models: extra low, low, high, extra high
- M-NET connectivity for use with CITY MULTI central controllers and BMS interfaces
- Sound pressure level: maximum sound level 42.5 dB(A)
- Three ventilation modes: Auto, Bypass, Heat Recovery
- High efficient ECM motors
- Patented Lossnay core



Bypass Ventilation Standard

Lossnay models offer three ventilation modes:

- Energy Recovery – Heat Exchange
- Bypass – No Exchange
- Automatic – Heat Exchange/Bypass

With conventional ERV's, bypass ventilation was impossible without attaching additional dampers and adapters. With the LGH-F-RX5-EI series, however, this mode is available without the use of other parts. An automatic mode allows the system to select recovery or bypass as required.

Multi-Function LCD Remote Controller

The compact and attractive remote controller with a liquid crystal display is designed for easy visibility.

- On/Off, Heat Recovery Mode, Bypass Mode and Automatic mode
- Filter Maintenance Display
- Timer Operations
- Controls up to 16 Lossnay units in a single group
- Night Purge

PremiSys[®] By Mitsubishi

The PremiSys series of rooftop ventilation products is a premier solution for conditioning outdoor air for commercial buildings. Designed to handle 100% outdoor air with energy recovery models, PremiSys products offer premium features ideal for handling ventilation air in VRF applications.

The PremiSys[®] Fusion is the latest addition to the family of dedicated outdoor air systems. The MPF-1 and MPF-2 (split system with energy recovery) models are pre-engineered to provide semi-custom flexibility while maintaining the quality, consistency and value of a standardized product. The split-system design further enhances the flexibility of applying Mitsubishi products to any building.

PremiSys[®]

- 500 CFM to 18,000 CFM
- 5-70 Tons

Heat Pump DOAS

- Up to 8,000 CFM
- Up to 30 Tons

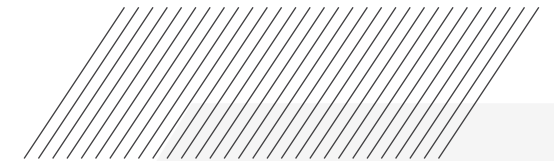
Gas/AC

- Up to 18,000 CFM
- Up to 70 Tons

Unit Size

- MPE-1, -2, -4, -5

2018 WSEC 1.0W/CFM models available with factory selections



VENTILATION PRODUCTS



RenewAire has been a pioneer in Energy Recovery Ventilation for over 35 years. Their ERV's improve health, productivity and well-being by enhancing indoor air quality in buildings of all types. Their ERV's optimize energy efficiency lowering capital and operational costs by reducing HVAC loads.



Commercial ERV's

- HE and LE Series
- 250 – 11,000 CFM
- Indoor and Outdoor Units
- Energy recovery – Static Plate Core

Commercial DOAS

- DN Series
- 375 – 4,950 CFM
- Indoor and Outdoor Units
- Factory Installed VFD and Motorized Dampers Standard

Optional Accessories

- ECM Motors
- VFD's
- Motorized Isolation Dampers
- Curbs
- Electric Duct Heaters with SCR
- Gas Fired Duct Furnaces
- Filter Alarms



Rooftop Heat & Energy Recovery Ventilators

- | | |
|---------------------|-------------------|
| VS 3000 RT | VS 1000 RT |
| • 208 – 30 or 480 V | • 208 or 240 V |
| • 750 – 3,000 CFM | • 75 – 1,000 CFM |

Ceiling Mount Heat & Energy Recovery Ventilators

- | | |
|-------------------|-----------------|
| VS1200CM | VS400CM |
| • 240 VAC | • 240 VAC |
| • 300 – 1,200 CFM | • 120 – 400 CFM |
| VS900CM | VS250CM |
| • 240 VAC | • 240 VAC |
| • 200 – 900 CFM | • 60 – 270 CFM |



Ventacity offers a complete portfolio of ultra-efficient ventilation systems that support superior air quality while also providing energy recovery. Ventacity's best-in-class heat and energy recovery ventilation systems are designed for easy installation, energy savings and durability. Increase building health, comfort and efficiency, while reducing HVAC energy, with a complete family of Ultra High Efficiency fully featured ERV's and HRV's. In addition, Ventacity's Smart Building Platform provides the ability to remotely monitor and analyze your complete HVAC solutions for better performance, lower maintenance costs and maximized operation efficiency.

Quiet, Decentralized Heat & Energy Recovery Ventilators

- | |
|-----------------|
| VS500 SQ |
| • 208 – 240 VAC |
| • 117 – 500 CFM |

Reznor is a worldwide leader in gas fired heating, ventilation and air conditioning. The Reznor team designs and manufactures unit heaters, air handling units, condensing units, heat pumps and other HVAC equipment for industrial and commercial buildings that bring comfort to its users and savings to its owners.

DOAS

- 1,000 – 10,000 CFM
- 5 – 30 Tons
- 75 – 800 MBH
- 10 – 90kw Electric Heat

Options & Accessories

- Mixing Box, Low leak Dampers, VFD's, Curbs, Multiple Orientations, BACnet / Lon Communication

Indoor & Outdoor Air Handlers

- 500 – 7,500 CFM
- 3 – 45 Tons (with Split Condenser)
- 75 – 400 MBH 4:1 and 8:1 Modulation
- 10 – 120kw Electric Heat with SCR
- Hydronic Heat / Chilled Water


Commercial Packaged Systems

- 1,000 – 13,000 CFM
- 5 – 70 Tons
- 100 – 1,600 MBH 8:1 and 16:1 Available
- 10 – 180kw Electric Heat with SCR
- ERV – Wheel
- VFD Control
- Vertical / Horizontal Discharge
- Motorized Dampers
- Hot Gas Reheat, Hot Gas Bypass, Coil Coating, Power Exhaust
- Neutral Air / Space Temperature Control, Sensors to BMS, Dry Contacts


Unit Heaters

- Applications for space heating warehouses, factories, greenhouses, commercial buildings, industrial, gymnasiums, residential garages, retail and more!
- Compact, making installation easy and requires only minimal space
- Zone heats directly where you need it
- Wide range of types and sizes to choose from
- Energy efficient, money saving operation
- Aesthetically pleasing offering you industrial strength with showroom appearance

 **Heating Capacity**
30 – 1,200 MBH

 **Energy**
2 – 60 kW

 **Cooling Capacity**
380 – 16,750 CFM

 **Humidity**
13 – 350 MBH



PACKAGE/SPLIT SYSTEMS



American Standard
HEATING & AIR CONDITIONING



Foundation

- 3 – 5 and 15 – 25 Tons available
- Packaged gas/electric
- Packaged cooling 15 – 25 Tons
- 3 Phase only



Impack

- 2 – 5 Tons
- Convertible Airflow
- Packaged gas/electric, HP and AC
- 1 Phase and 3 Phase



XR Splits

- 3 – 5 Tons
- 3 Phase HP and AC



Precedent

- 3 – 10 Tons
- Packaged gas/electric, HP and AC
- 3 Phase only



Odyssey Splits

- 6 – 25 Tons AC
- 6 – 20 Tons HP
- Dual Compressor available from 6 – 25 Tons
- 3 Phase HP and AC



Voyager

- 12.5 – 25 Tons
- Dedicated downflow and horizontal applications
- Packaged gas/electric, HP and AC
- 3 Phase only



Locally manufactured in
Tacoma, WA



New Machinery

Since 2015, Columbia Manufacturing has invested over \$7.3 million on new, high efficient machinery in an effort to provide Customers with the highest quality products at the most competitive price.

Special Fab

If we don't have it, we can build it.

Adapter Curbs

- Labor saver for all packaged light commercial equipment
- Heavy gauge galvanized steel construction
- Return and supply insulated chambers line up to existing ductwork
- Each curb includes gasketing
- Supply and return duct chambers included
- Continuous welded seams and corners
- Machinery Eye Bolts included for hoisting

Spiral/Oval Pipe & Fittings

- Stainless Steel
- PVC coated
- Spiracoustic
- Double walled
- Aluminum
- Spooled
- Galvanized
- LEED wrapped
- Paint lock

Insulated Pipe/Duct

Duct/Fittings

- Available in ½ – 2" insulation
- Double walled
- LEED wrapped

Pipe/Fittings

- Available in 1 or 2" insulation

Grease Duct

- Single seam construction
- 48" and 60" lengths
- 5/8" Flange on both ends
- Stainless, galvanized, cold and hot rolled construction
- Fully welded
- Light tested for leakage

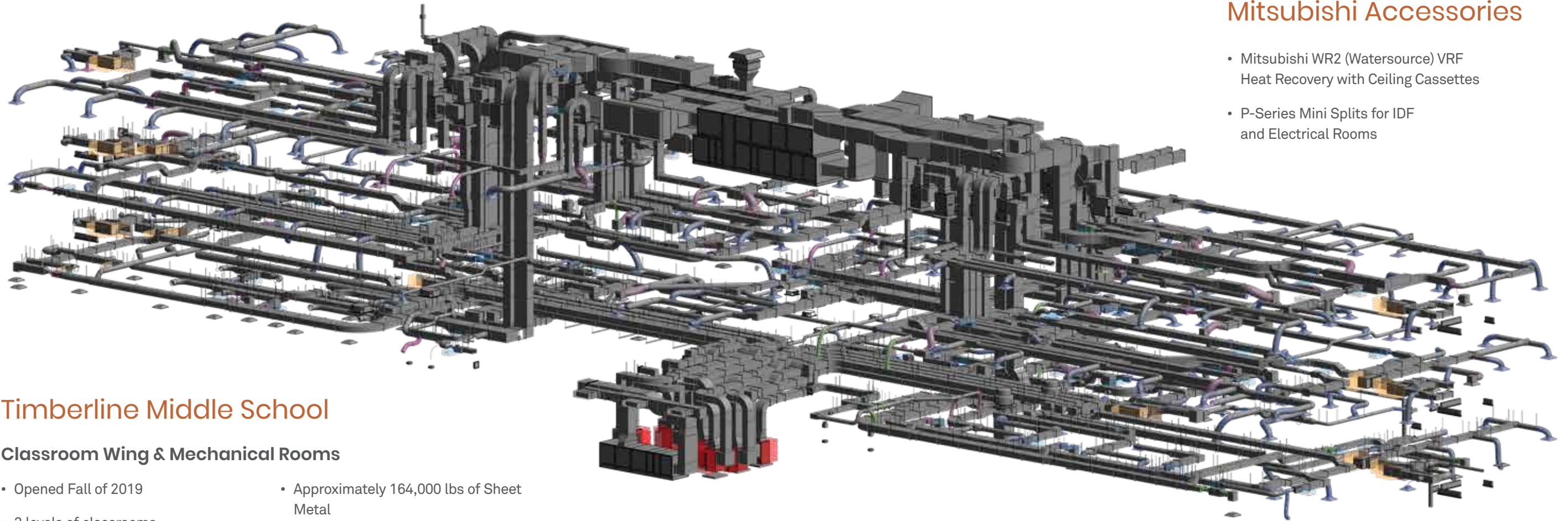




Emerald Queen Casino

Tacoma, WA

- 60", 2" Double Wall Spiral Elbows with Flanges. Built in three 30° sections to assemble on site. Over 10' high and 5' wide when finished
- 80+ deliveries to the jobsite
- Over 120,000 lbs of sheet metal fabricated and delivered
- Over 1,500 labor hours worked
- Sheet metal was tagged/color coded per drawings, saving valuable time in the field



Mitsubishi Accessories

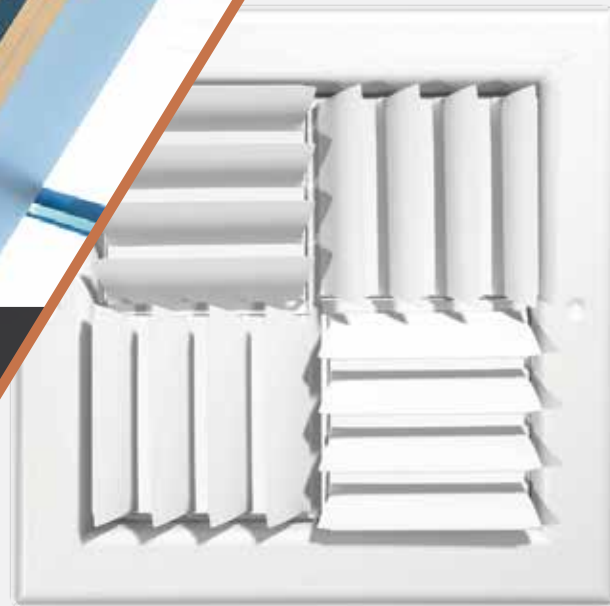
- Mitsubishi WR2 (Watersource) VRF Heat Recovery with Ceiling Cassettes
- P-Series Mini Splits for IDF and Electrical Rooms

Timberline Middle School

Classroom Wing & Mechanical Rooms

- Opened Fall of 2019
- 3 levels of classrooms
- 134,000 sq. ft. building
- Approximately 164,000 lbs of Sheet Metal
- 90+ different deliveries to the jobsite

Custom Fab to help you accomplish any job. Email mfgquote@gensco.com



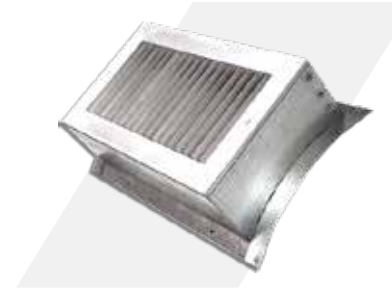
HVD

Southport Hyatt

Renton, WA

- 347 Guestrooms and Suites
- 335,000 total sq. ft.
- Linear Air Bars
- 935FG – Fixed 45° Steel Blade Filter Grilles

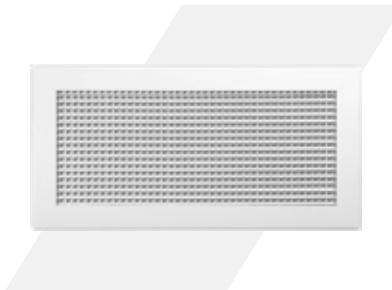
SD34



645



MA



Product Offering

Grilles, Registers & Diffusers

- Locally Manufactured in Cle Elum, WA
- Security Styles Available
- Steel, SS and Aluminum, Anodized or Coated / Painted
- Clean Room Available
- Linear Slot Diffusers
- Air Bars (accessories required)

Louvers

- Extruded Aluminum or Steel Construction
- Drainable and Non-Drainable
- Bird Screen

Dampers

- Vertical / Horizontal
- Fire / Smoke

PTAC'S & VTAC'S



Packaged Terminal Air Conditioners and Vertical Terminal Air Conditioners



Trane

PTAC

- Available in four sizes: 7, 9, 12, 15 MBH
- 3.5kw and 5kw heater available
- Seacoast Coil Coating



Amana

PTAC

- Available in four sizes: 7, 9, 12, 15 MBH
- 1.5kw – 5kw heater available

VTAC

- Available in four sizes: 9, 12, 15, 24 MBH
- HP and AC



Friedrich

PTAC

- Available in four sizes: 7, 9, 12, 15 MBH
- Inverter Compressor available
- 2.5kw – 5kw heater available

VTAC

- Available in four sizes: 9, 12, 18, 24 MBH
- HP, AC and Electric Heat
- 2.5kw – 10kw heat available



- PTAC
- VTAC



- Packaged AC, Heat Pump and Gas Electric
- Split Systems AC and Heat Pump



- Evaporative Coolers
- Smart Electronic Controller



- Bathroom Fans



- ERV
- Economizers



- Dampers
- Louvers
- Equipment Screens



- Ventilation Fans
- Inline and Supply Fans
- ERV



- Evaporative Coolers
- Rigid Media
- Aspen Media



- Electric Heaters
- Infrared Heaters
- Garage Heaters



- Residential and Commercial ERV and DOAS units



- Kitchen Ventilation
- Fans and Ventilators
- Make-up Air Units



- Commercial HRV and ERV
- Fans
- Make Up Air



- DX and 4 Pipe Fan Coils
- Cabinet
- Wall and Ceiling



- PTAC
- VTAC



- Water source and geothermal heat pumps
- 0.5 – 25 Tons
- Multiple unit styles and configurations



- Ventilation Fans



- Gas Unit Heaters
- Make-up Air Units
- Radiant and Electric Heaters



- Heat Pump Water Heaters
- Ozone Friendly CO2



- Centrifugal Fans
- Inline Fans
- Propeller Wall Fans
- Bathroom fans



- Grilles, Registers, Diffusers
- Louvers, Dampers
- Custom Fabrication available



- Commercial Electric Heaters and Furnaces
- Explosion Proof
- Water Splash Proof



- Residential HRV and ERV
- Commercial HRV and ERV



- DX Fan Coils
- 2 Pipe and 4 Pipe
- Ventilators



- Economizers
- ERV
- Seismic Curbs



- Split Systems
- VRF
- Ventilation



- Packaged AC, Heat Pump and Gas Electric
- Split Systems AC and Heat Pump



- Custom build Duct Heaters
- Electric, Strip and Tube Heaters
- Duct Infrared Heaters



- Custom Built Duct Heaters
- SCR Controls
- Special Application



- Ultra-efficient ventilation solutions
- Rooftop Ventilators
- Quiet, Decentralized Ventilators
- Ceiling Mount Ventilators

Our 24 Branches & 2 Distribution Centers

 <p>WASHINGTON</p> <ul style="list-style-type: none"> • Auburn • Bellingham • Bremerton • Everett • Kennewick • Kirkland • Tacoma Distribution Center • Olympia • Seattle • Spokane • Tacoma • Vancouver • Yakima 	 <p>OREGON</p> <ul style="list-style-type: none"> • Bend • Eugene • Hillsboro • Milwaukie • Southern Distribution Center • Medford • Portland • Salem • Tigard 	
 <p>IDAHO</p> <ul style="list-style-type: none"> • Boise 	 <p>ALASKA</p> <ul style="list-style-type: none"> • Anchorage 	 <p>MONTANA</p> <ul style="list-style-type: none"> • Billings • Missoula

We offer **LEED wrapping** to preserve quality and help speed up installation.



Boom Truck and other delivery services are available to transport your products quickly and efficiently.



Delivery Carts are available to help move product easily while on the jobsite.



Gensco's Sales Team is dedicated to providing a broad range of solutions and logistical support for commercial applications.

- 

Inventory Storage
Store equipment in our warehouses around the region until your jobsite is ready for delivery and installation
- 

Time Sensitive Deliveries
Schedule job site deliveries to arrive within a designated time slot
- 

Up to Date Tracking
Track your orders in real time
- 

On-Site Logistics Consultation
Pre-job consultation available to determine all logistical needs
- 

Boom Truck
Available for easy on-site delivery (available in Western Washington only)
- 

Palletization
Custom packing of pallets upon request (by floor, building, etc.)
- 

Delivery Carts
Our delivery carts are Crane Pick Certified and available for use on the job site



DID YOU KNOW?
We have a **Freight Team** that will help with out of town work!



MEET OUR TEAM

GENSCO | COMMERCIAL

Bret van den Heuvel
VP of Equipment Sales

Inside Quoting Team

Inside Department Manager

Lyle Brownell

Unitary Team

Brian Andres (Team Lead)

Joe Gately

Maddy Johnsen

Sean Thornton

Trina Alexander

Lindsey Vaughan

Mitsubishi/Air Distribution Team

Jed Steinhorst (Team Lead)

Jason Higgins

Joe Wuolle

Steven Cabrera

Hunter Minch

Gavin Ames

Tim Becker

Logistics Team

Sara Miller (Team Lead)

Jimmy Gibbs

Gavin Ames

Jacob Phillips

Isaac Taylor

Outside Sales Team

Jeff Blankenship

Tacoma, Washington
(253) 720-3993

jblankenship@gensco.com

Jake Neill

Spokane, Washington
(509) 919-1588

jneill@gensco.com

Lew Keller III

Auburn, Washington
(206) 730-0581

lkeller@gensco.com

Gary Kruger

Kirkland, Washington
(206) 730-0679

gkruger@gensco.com

Anthony Moore

Portland, Oregon
(541) 554-5842

amoore@gensco.com

Stuart Branine

Portland, Oregon
(503) 899-9483

sbranine@gensco.com

Nathan Phillis

Billings, Montana
(406) 850-3525

nphillis@gensco.com

Commercial Engineers

Brian Wuebke, PE

Seattle, Washington
(206) 348-5283

bwoebke@gensco.com

Steven Arms, PE


Portland, Oregon
(971) 940-6415


sarms@gensco.com

Chris Grauert, ME

Seattle, Washington
(425) 531-5019

cgrauert@gensco.com

 (888) 515-9555

 CommercialSales@gensco.com

Certified Mitsubishi Training Centers

The Pacific Northwest's only Mitsubishi Certified Training Rooms are located at the Gensco Tacoma and Vancouver Branches.

CITYMULTI®

CITY MULTI Service Course

This course provides participants with an in-depth understanding of the technologies used in the CITY MULTI system.

Maintenance Tool Diagnostics

An overview of Mitsubishi CITY MULTI systems focusing on functionality during cooling, heating and defrost modes.

Mr. SLIM®

Mr. Slim Service Course

This course provides participants with an in-depth understanding of the technologies used in the CITY MULTI system.



Register for courses on [GenscoCustomer.com](https://www.gensco.com/customer)



Outside Tech Support

Northern Region

Rick Cummins
Mitsubishi DSG
(206) 261-9187
rcummins@gensco.com

Jonathan Nordensson
Mitsubishi DSG
(425) 366-2296
jnordensson@gensco.com

Eastern Region

Jim Stevens
Trane, AMS, Ameristar
and Rheem
(509) 534-7662
jstevens@gensco.com

Southern Region

David Wood
Mitsubishi DSG
(503) 288-7473
dwood@gensco.com

Jamen Maier
Trane & AMS
(425) 513-6968
jmaier@gensco.com

Chris Stein
Mitsubishi DSG
(509) 309-5345
cstein@gensco.com

Stan Jaco
Trane, AMS and Ameristar
(503) 335-2252
sjaco@gensco.com

Inside Tech Support

Aaron Larson
Technical Service Manager
(208) 489-3128
alarson@gensco.com

Bekah Dotson
Technical Support Specialist
(253) 620-8291
rdotson@gensco.com

Kevin Quichocho
Technical Support Specialist
(253) 926-2086
kquichocho@gensco.com

24/7 Convenience

Place orders anytime



Accuracy

Get exactly what you need, no over the phone orders



Speed

No waiting in line or on hold



Replenishment

Create shopping lists for stock replenishment



Price and Availability

Get real time access to price and availability



Go Paperless

Pay your invoices online. Download orders, invoices, quotes and statements



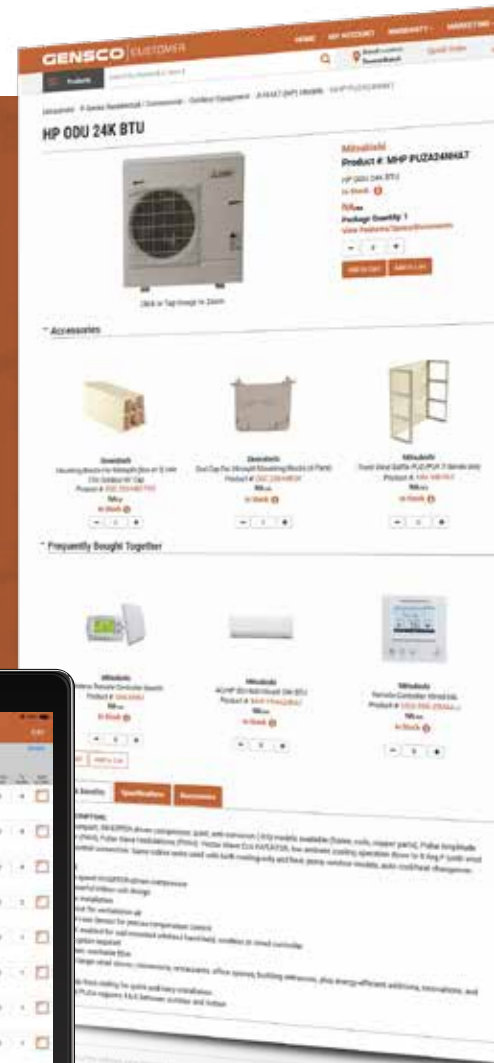
Information

Product information, sales tools and technical resources readily available



Stockroom Labels

Let Gensco help you organize your stockroom or trucks with custom labels



Download the Gensco App!

